

# Panorama hike Larcher Alm



Uphill ascent  
740 m



Descent  
740 m



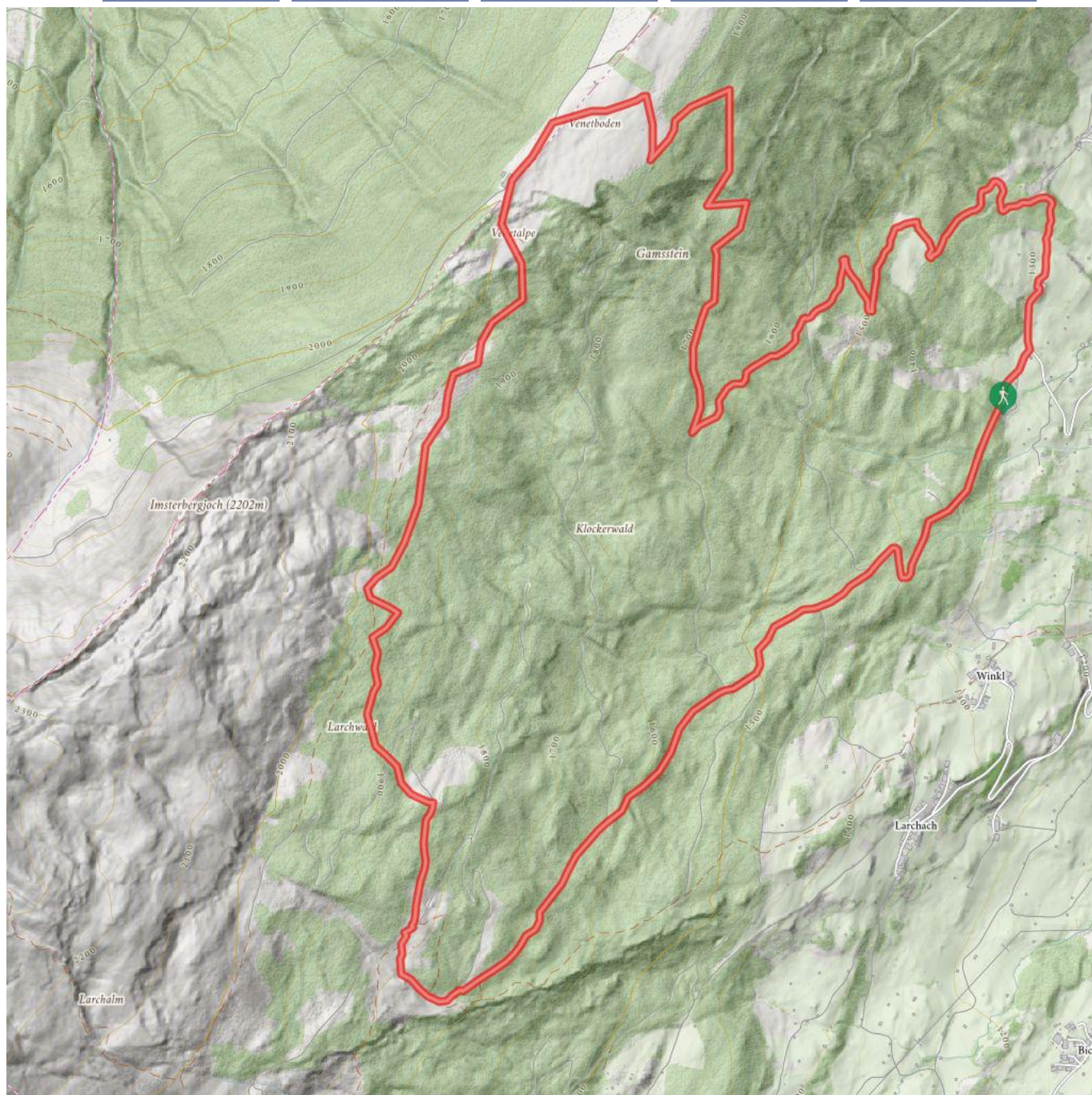
Highest point  
1994 m



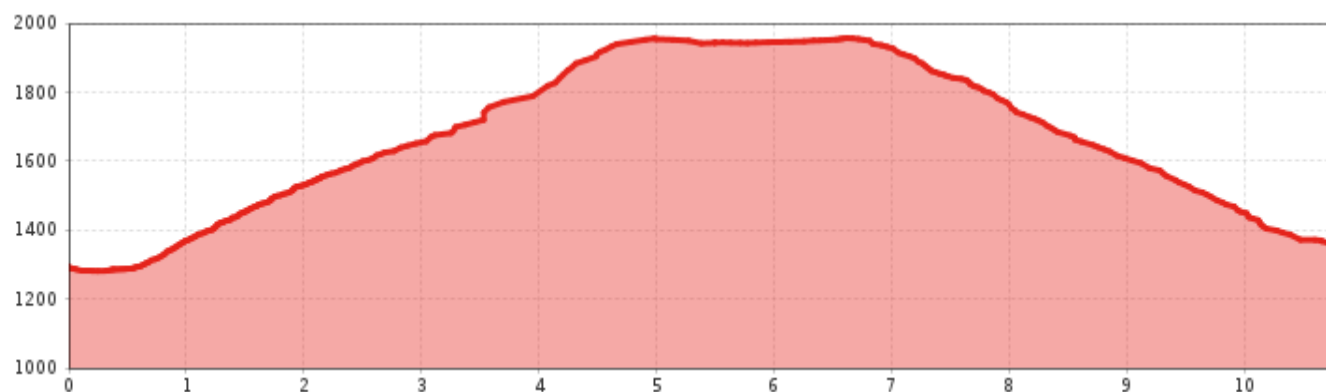
Route length  
10,8 km



Walking time / total  
4:00 h



# Panorama hike Larcher Alm



## Information

Starting point **Car park Audershof**  
Destination point **Car park Audershof**  
Path surface **asphalt, forest path, track**

## Route type

☒ Circular hike

Arrival  
**For the arrival by car use the car park Audershof.**

## Description

At the fork, turn towards Farmie and then on to Amishaufen, where a steep track forks off to the left. A little further keep right and walk in the direction of Gamsstein just below the catered mountain hut Venetalm. On leaving the Venetalm, take the track to the left down towards the catered mountain hut Larcher Alm. From there, take the track to the left to Auders.



## Impressions





