

IVV Valley hike



Uphill ascent
335 m



Descent
1290 m



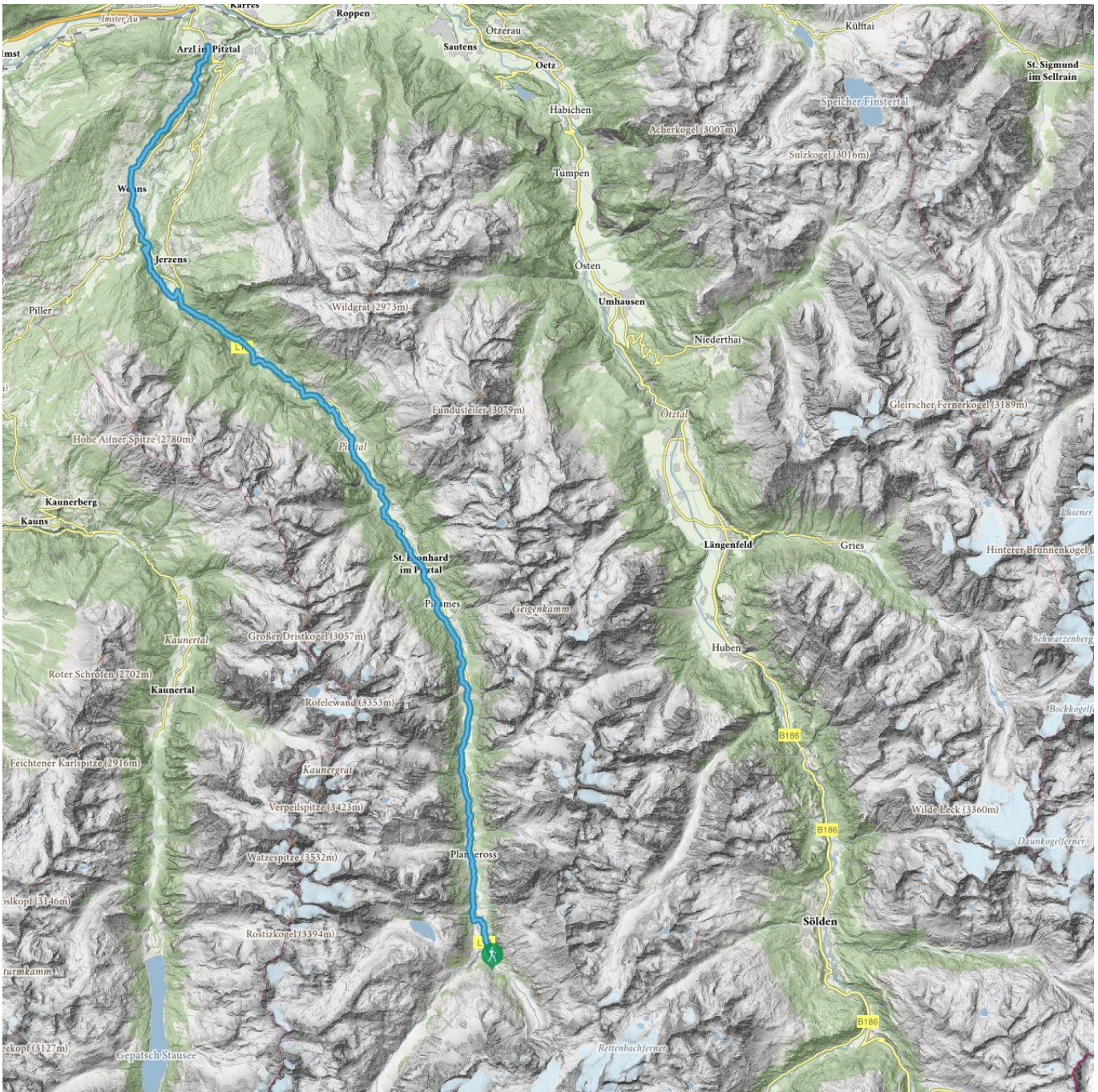
Highest point
1736 m



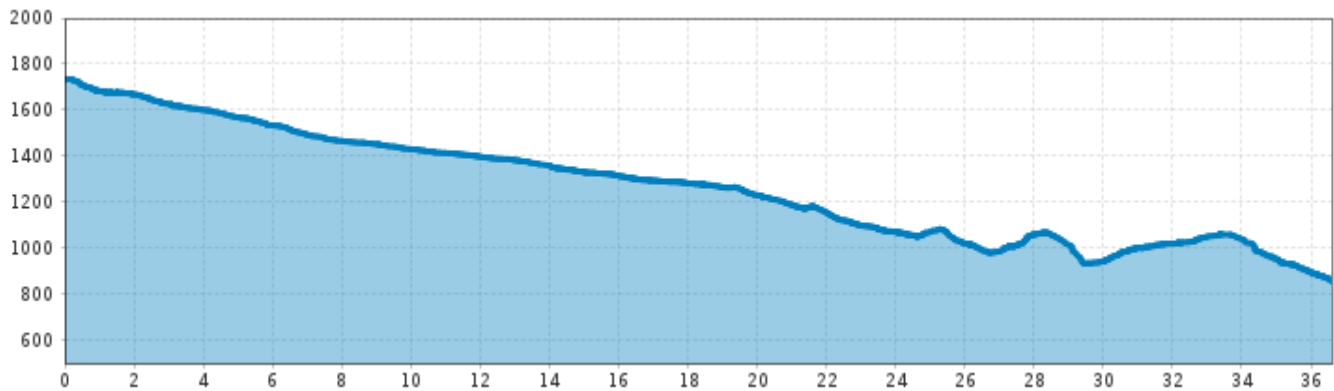
Route length
38 km



Walking time / total
10:00 h



IVV Valley hike



Information

Starting point	Mittelberg
Destination point	Arzl
Path surface	wide path, path

Description

Area between Unterrain and Boden/Hairlach, Schußlehn and Schön, as well as Matzlewald and Pitzenhöfe closed

The valley hiking trail leads from Mittelberg to Arzl. Return as you please: either on foot via the same route or simply by using the Regio Bus to take you back.

Duration: at leisure

Parts are suitable for prams - may include gradients:

- Mittelberg bis Köfels
- Trenkwald bis Schön
- St. Margarethen bis Abwz. Timmls