

Talwanderung von Mittelberg nach Stillebach



Elevation gain
10 m



Elevation loss
340 m



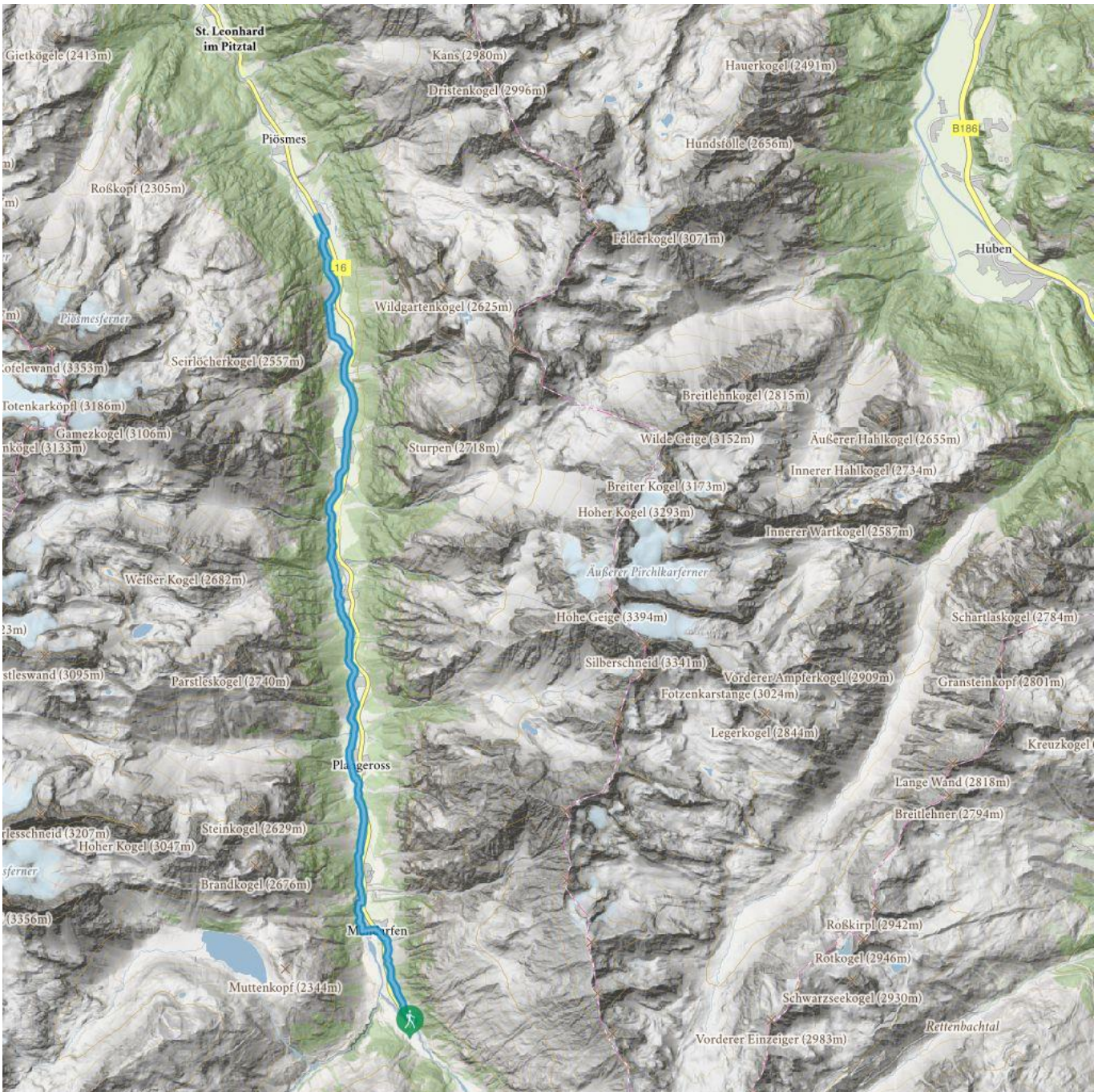
Highest point
1680 m



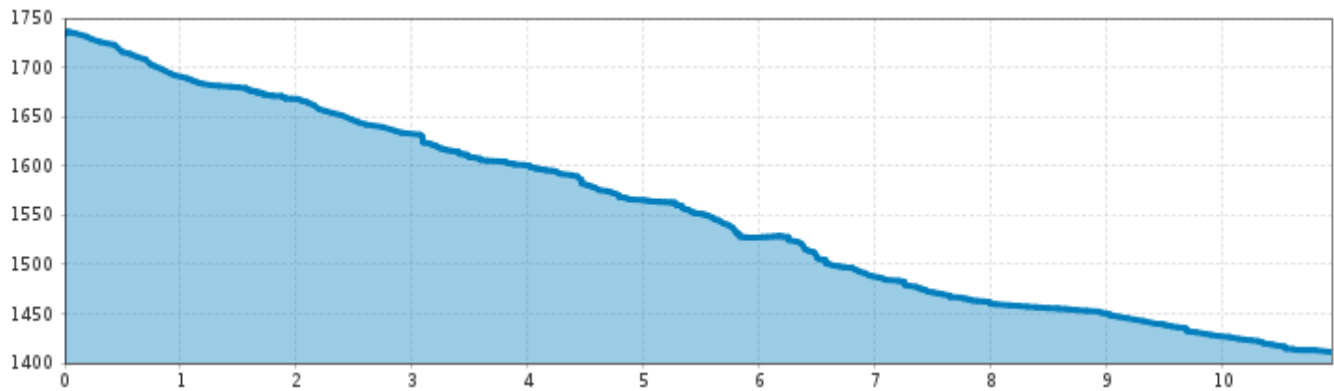
Route length
11 km



Walking time / total
3:00 h



Talwanderung von Mittelberg nach Stillebach



Information

Starting point

Bus stop Mittelberg Wendestelle

Finishing point

Bus stop Stillebach

Route type

Hike suitable for prams

Getting there

Take the bus till the bus stop Mittelberg Wendestelle. For the arrival by car use the car park Gletscherbahn.

Description

This section of the valley hike takes you from Mittelberg along the wild romantic River Pitze to Stillebach. The broad hiking trail is not just perfect for walking with prams but also popular with mountain bikers. The trail takes you past numerous waterfalls and at the end of the hike you can cool down and refresh your feet in an icy cold Kneipp hydrotherapy pool. Return to your starting point via public bus. For more information regarding departure times please contact your accommodation provider or the respective tourist information office of Pitztal Tourism Association.

 Impressions

