

# Three lake tour (Brechsee, Krummersee, Kugletersee)

Uphill ascent  
1380 m

Descent  
1380 m

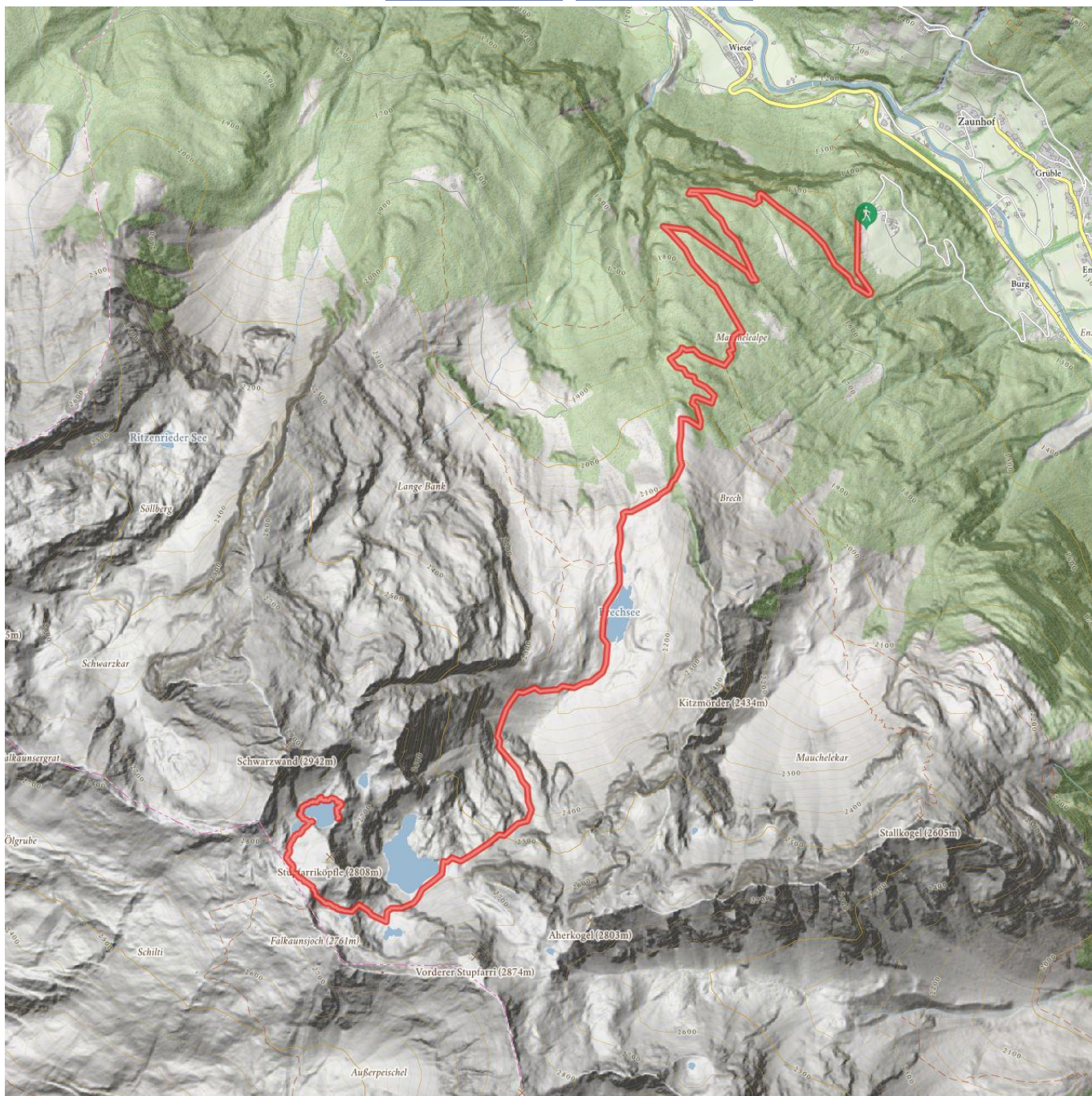
Highest point  
2774 m

Walking time / ascent  
4:30 h

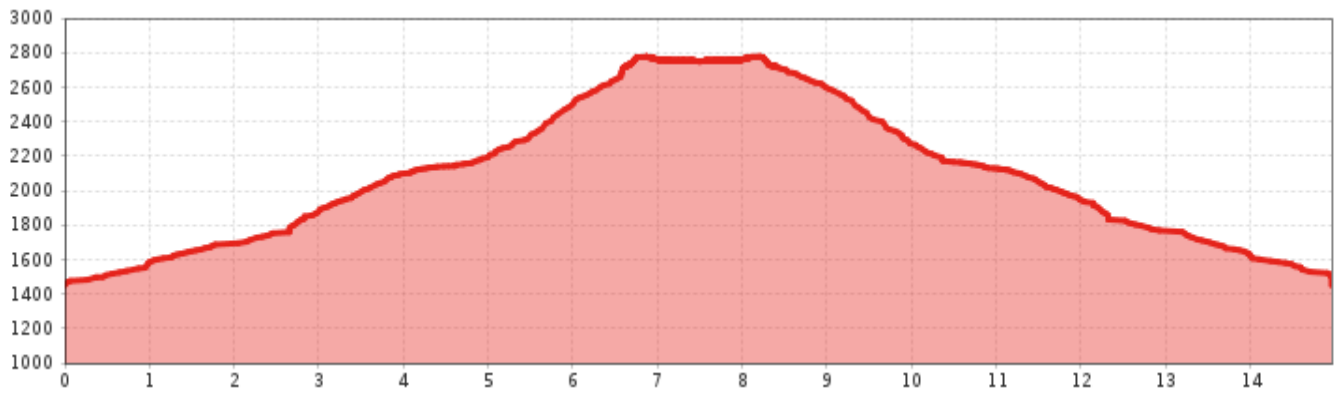
Route length  
13,3 km

Walking time / total  
8:30 h

Walking time / descent  
4:00 h



## Three lake tour (Brechsee,Krummersee,Kugletersee)



### Information

Starting point	<b>Rehwald</b>
Destination point	<b>Rehwald</b>
Path surface	<b>wide path, track</b>
Arrival	
<b>Take the bus till the bus stop Zaunhof Moosbrücke. After a 45 minutes walk you reach the startin point Rehwald.</b>	

### Description

Follow the agricultural road from Rehwald to the catered mountain hut Mauchele Alm. From there turn off on a trail towards Lake Brechsee which you will reach within 1 hour from the hut. It is another 1 hour 30 minutes walk to Lake Krummersee. After 50 minutes you reach the Lake Kugletersee. Return to the start via the same route.



 Impressions





