

Pitztal Alpine Pasture Route



Elevation gain
800 m



Elevation loss
800 m



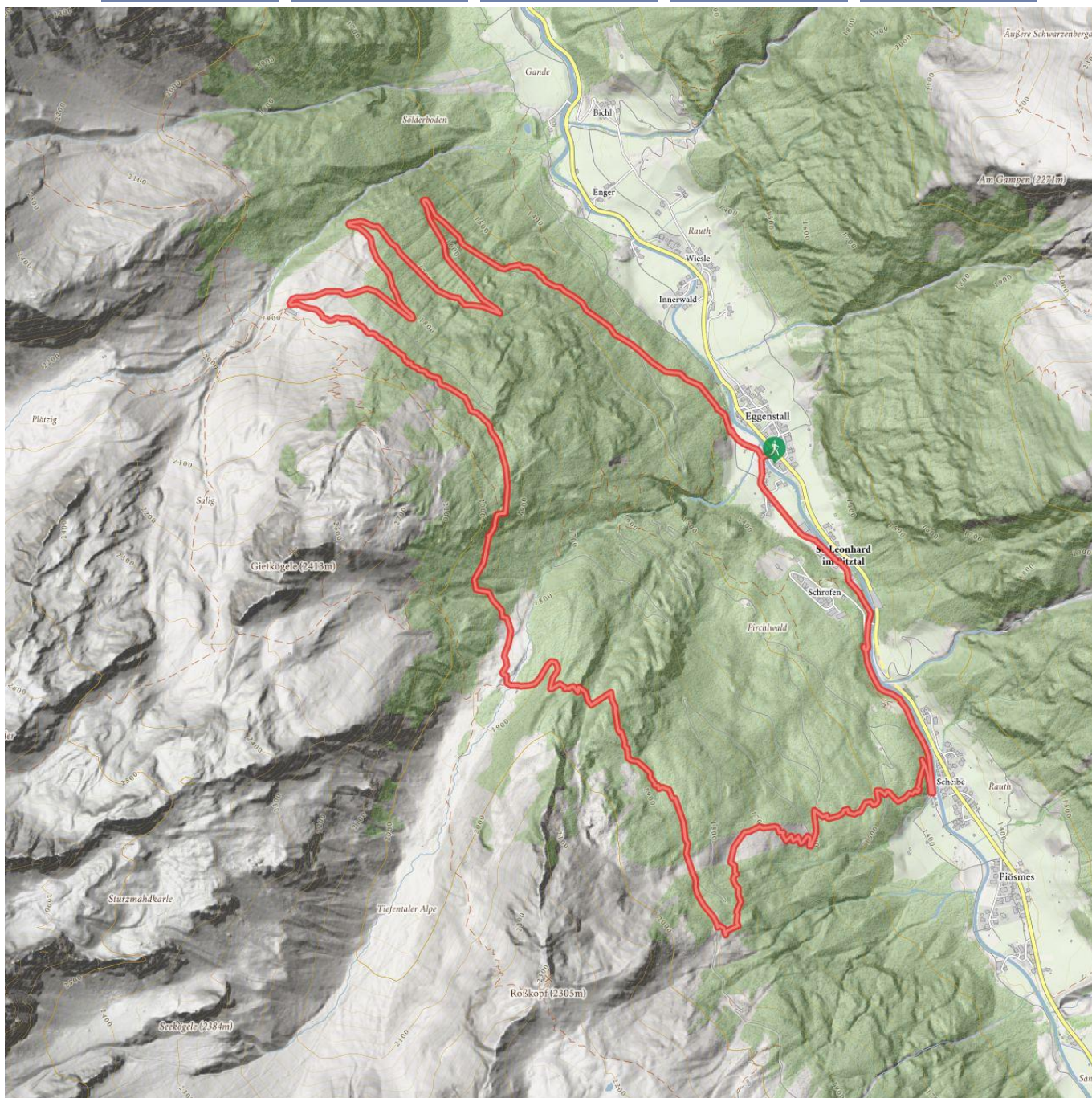
Highest point
1966 m



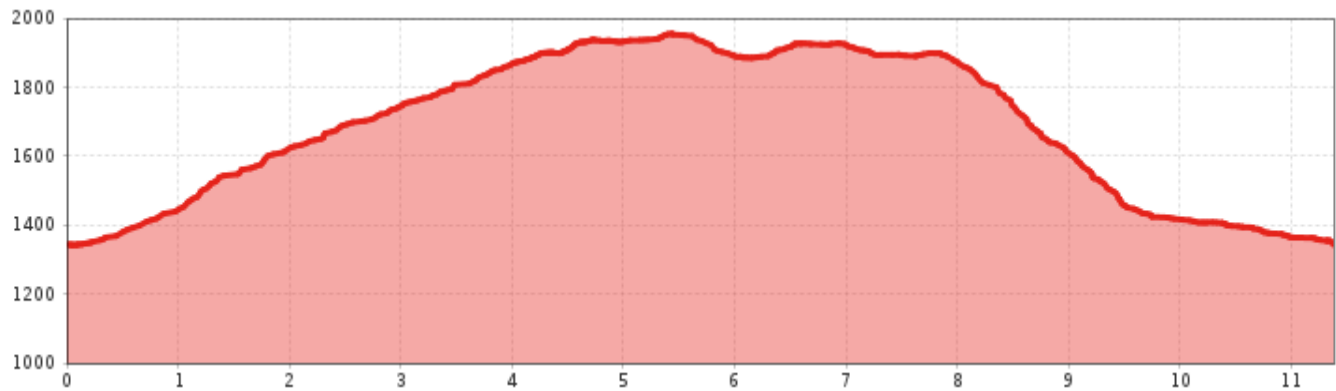
Route length
11,4 km



Walking time / total
4:30 h



Pitztal Alpine Pasture Route



Information

Starting point	Eggenstall
Finishing point	Eggenstall
Path surface	forest path, track

Route type

Circular hike

Getting there
Take the bus till the bus stop St. Leonhard Ghf. Sonne Liesele.

Description

Due to logging work, the forest roads to the Mauchelealm and Neubergalm will be closed from Saturday, 25 May until further notice.

From the starting point walk along the moderately steep agricultural road up to the beautiful catered mountain hut Neubergalm. From there, take a shaded steep path through a forest to the catered mountain hut Tiefentalalm,

set in a scenic location. The path continues behind the Alm left over a bridge to the catered mountain hut Arzler Alm. Descend on the agricultural road or via a forest path to Scheibe. Then turn left and walk along the Pitze river to return to your starting point in Eggenstall, which is an easy 30 minutes' walk away.

 Impressions

